

cornerstone facilities

wetland and environmental centre



wetland and environmental centre

Situated adjacent to Purtinga Creek at the Eastern end of the College site, the Wetland area and adjoining Environmental Centre is a dynamic resource for studying the local ecosystem.

The Wetland is designed to revitalise the natural waterway of Purtinga Creek, making for a highly interactive resource for schools and other interest groups.

Overshadowed by Eucalypts that are indigenous to the area, there is an abundance of native birdlife with a true sense of being in the Australian bush. This is a feature of the walking trails that wind their way through the natural environment providing many vantage points.

The design of the Environmental Centre also lends itself to being an excellent display of utilising natural resources with use of natural light, energy, recycling and biodiversity. It also provides for exceptional views of the Wetland area and Purtinga Creek.

It accommodates storage, offices, and two separate spaces, one being a presentation space and the other a classroom style layout including a wet area with plenty of bench space and room for additional work tables and chairs.

The classroom layout has ample floor space and built-in benches running around the walls to facilitate the use of multiple laptops in training sessions and workshops.

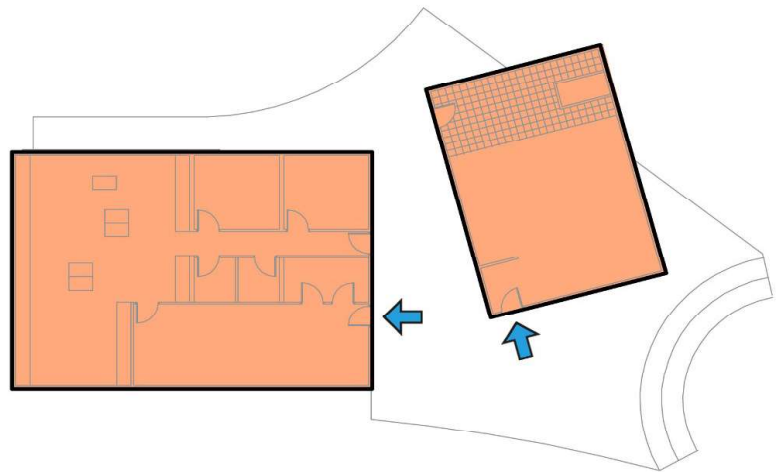
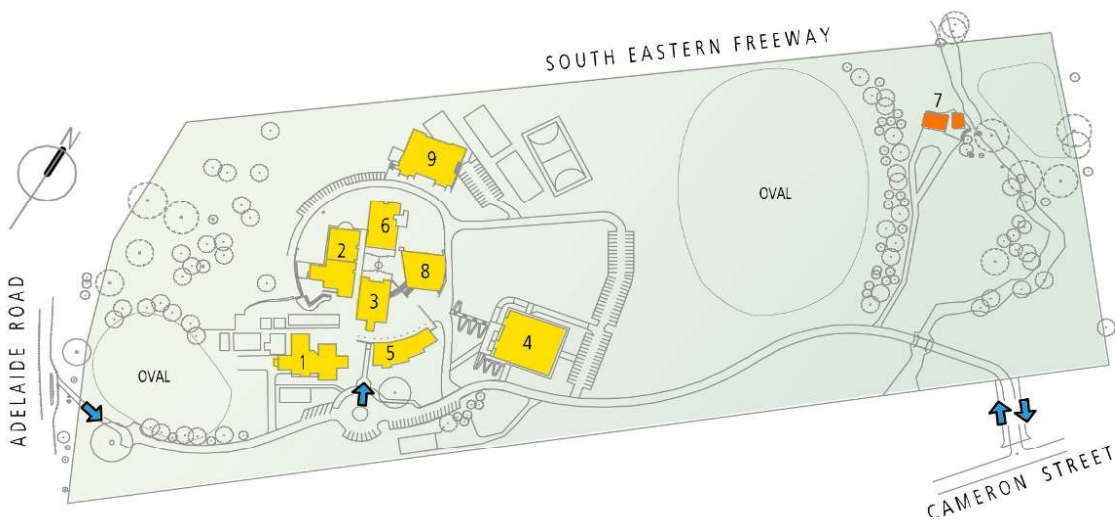
There is wireless Broadband connectivity within the Centre as well as an many power points for computers, printers, data projectors and other equipment.

cornerstone facilities

wetland and environmental centre

Hire Fee Charges		
Facility Description	Hire Duration	
	Day Hire	Half Day Hire
Wetland and Environmental Centre	\$250.00	\$140.00

Facility Description	Hire Duration	
	Day Hire	Half Day Hire
Additional Cleaning		\$30.00 / hour
Digital Projection Equipment		



TENILLE SEARL

Facilities Coordinator

68 Adelaide Road, PO Box 820

Mount Barker SA 5251

direct line: 08 8398 6040

p: 08 8398 6000

f: 08 8398 6098

m: 0408 802 935

e: tsearl@cornerstone.sa.edu.au

www.cornerstone.sa.edu.au

